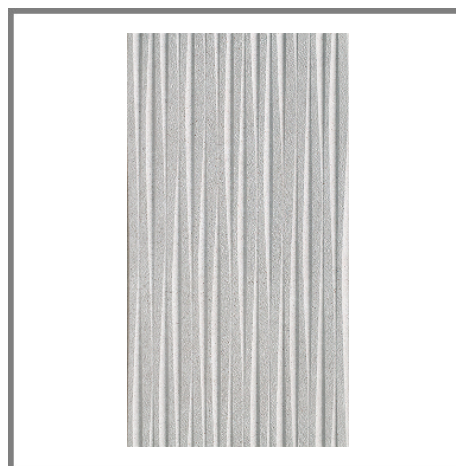


Model: DOVER MODERN LINE CALIZA 31,6X59,2(A)**Codes:** 100157374 - P32192821**Water absorption:** BIII**Thickness:** 11.4 mm

DIMENSIONAL FEATURES

UNE-EN ISO 10545-2

Thickness	11.4 MM	
Width	314.98 MM	
Length	591 MM	
Length and width deviation	Below 0.15%	<=0.5 %*
Side straightness deviation	Below 0.15%	<=0.5 %*
Squareness deviation	Below 0.15%	<=0.6 %*
Surface flatness deviation	Below 0.15%	<=0.5 %*

*ISO-13006:2012 UNE-EN 14411:2012

MECHANICAL FEATURES

UNE-EN ISO 10545-4-6-7-11

Breaking strength	1204 N	>600 N*
Crazing resistance	Resists 3 cycles	

*ISO-13006:2012 UNE-EN 14411:2012

HYGIENIC FEATURES

UNE-EN ISO 10545-13-14:1995

Chemical resistance	Class "A" for swimming pools and cleaning products (resists attack). Minimum Class "B" for acids and bases	CLASE B Min. *
Stain resistance	Class 5. Easy cleaning with water	CLASE 3 Min. *

*ISO-13006:2012 UNE-EN 14411:2012

SCOPE OF USE

Technical code-1	Use on walls	
------------------	--------------	--

PACKING

Boxes	0.94 M2/CS	
Pallets	67.6806 M2/PAL	
Units	0.188 M2/ST	

Certificaciones del sistema



Do not use cleaning agents containing hydrofluoric acid.

It is recommended to fix tiles with a minimum joint of 1,5 mm. Do not fix without joint.

For big sizes, it is recommended to fix with mortars containing polymeric additives and to use the double glueing technique.

Mosaic tiles must be grouted.

This document is only commercial and cannot be used as expert opinion, documentary evidence or in any legal or administrative procedure unless authorized by PORCELANOSA S.A.