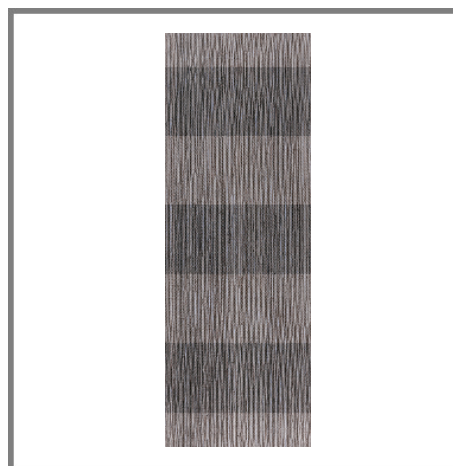


**Model:** JAPAN LINE MARINE 31,6X90(A)

**Codes:** 100135528 - P34706721

**Water absorption:** BIII

**Thickness:** 9.3 mm



### DIMENSIONAL FEATURES

UNE-EN ISO 10545-2

Thickness	9.3 MM	
Width	314.98 MM	
Length	900 MM	
Length and width deviation	Below 0.15%	<=0.5 %*
Side straightness deviation	Below 0.15%	<=0.5 %*
Squareness deviation	Below 0.15%	<=0.6 %*
Surface flatness deviation	Below 0.15%	<=0.5 %*

\*ISO-13006:2012 UNE-EN 14411:2012

### MECHANICAL FEATURES

UNE-EN ISO 10545-4-6-7-11

Breaking strength	1303 N	>600 N*
Crazing resistance	Resists 3 cycles	

\*ISO-13006:2012 UNE-EN 14411:2012

### HYGIENIC FEATURES

UNE-EN ISO 10545-13-14:1995

Chemical resistance	Class "A" for swimming pools and cleaning products (resists attack). Minimum Class "B" for acids and bases"	CLASE B Min. *
Stain resistance	Class 5. Easy cleaning with water	CLASE 3 Min. *

\*ISO-13006:2012 UNE-EN 14411:2012

### SCOPE OF USE

Technical code-1	Use on walls	
------------------	--------------	--

### PACKING

Boxes	1.1376 M2/CS	
Pallets	64.8427 M2/PAL	
Units	0.2844 M2/ST	

Certificaciones del sistema



Do not use cleaning agents containing hydrofluoric acid.

It is recommended to fix tiles with a minimum joint of 1,5 mm. Do not fix without joint.

For big sizes, it is recommended to fix with mortars containing polymeric additives and to use the double glueing technique.

Mosaic tiles must be grouted.

This document is only commercial and cannot be used as expert opinion, documentary evidence or in any legal or administrative procedure unless authorized by PORCELANOSA S.A.