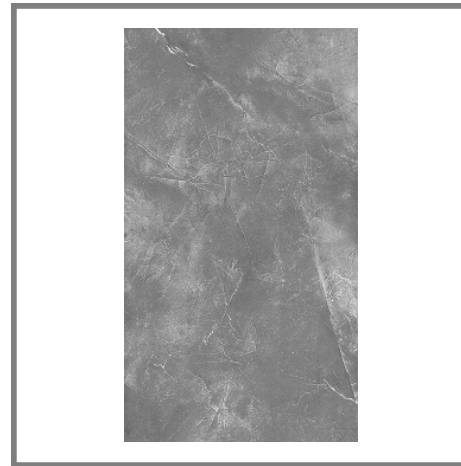


**Model:** MARMOL GRIS 33,3X59,2(A)  
**Codes:** 100200408 - V13499671  
**Water absorption:** BIII - Wall tiles ( $10\% \leq E \leq 20\%$ )  
**Thickness:** 8.6 mm



### DIMENSIONAL FEATURES

UNE-EN ISO 10545-2

Thickness	8.6 MM	
Width	333 MM	
Length	590.5 MM	
Length and width deviation	Below 0.15%	$\leq 0.5\%*$
Side straightness deviation	Below 0.15%	$\leq 0.5\%*$
Squareness deviation	Below 0.15%	$\leq 0.6\%*$
Surface flatness deviation	Below 0.15%	$\leq 0.5\%*$

\*ISO-13006:2012 UNE-EN 14411:2012

### MECHANICAL FEATURES

UNE-EN ISO 10545-4-6-7-11

Crazing resistance	Resists 3 cycles	
--------------------	------------------	--

\*ISO-13006:2012 UNE-EN 14411:2012

### HYGIENIC FEATURES

UNE-EN ISO 10545-13-14:1995

Chemical resistance	Class "A" for swimming pools and cleaning products (resists attack). Minimum Class "B" for acids and bases	CLASE B Min. *
Stain resistance	Class 5. Easy cleaning with water	CLASE 3 Min. *

\*ISO-13006:2012 UNE-EN 14411:2012

### SCOPE OF USE

Technical code-1	Use on walls	
------------------	--------------	--

### PACKING

Boxes	1.1819 M2/CS	
Pallets	56.7309 M2/PAL	
Units	0.197 M2/ST	

System Certification



Do not use cleaning agents containing hydrofluoric acid.  
It is recommended to fix tiles with a minimum joint of 1,5 mm. Do not fix without joint.  
For big sizes, it is recommended to fix with mortars containing polymeric additives and to use the double gluing technique.  
Mosaic tiles must be grouted.

This document is only commercial and cannot be used as expert opinion, documentary evidence or in any legal or administrative procedure unless authorized by PORCELANOSA S.A.  
A DCOF value of  $> 0.42$  is the new standard for tiles specified for commercial level interior applications expected to be walked upon when wet, in standard A137.1-2012. It replaces the SCOF value of  $> 0.60$  referenced in ADA Guidelines (measurement made as per the ASTM C1028 test method). However, there are many factors that affect the possibility of a slip occurring and then tiles with a DCOF of 0.42 or greater are not necessarily suitable for all projects. The specifier shall determine if tiles are appropriate for specific project conditions, considering by way of example, but not limited to: type of use, traffic, expected contaminants, expected maintenance, expected wear and manufacturer guidelines and recommendations. Tiles with a DCOF inferior to 0.42 shall only be installed when the surface will kept dry when walked upon and proper safety procedures are followed when cleaning the tiles.